

PLAT OF SECTION 10

A SUBDIVISION OF
LEHIGH ACRESLEE COUNTY, FLORIDA
LEE COUNTY LAND AND TITLE COMPANY
DEVELOPERSDESCRIPTION

ALL OF SECTION 10, TOWNSHIP 45 SOUTH, RANGE 27 EAST, LEE COUNTY, FLORIDA

APPROVALS

KNOW ALL MEN BY THESE PRESENTS, THAT LEE COUNTY LAND AND TITLE COMPANY, A CORPORATION UNDER THE LAWS OF FLORIDA, BEING THE OWNER OF THE LAND DESCRIBED IN THE CAPTION HEREON HAS CAUSED THIS PLAT OF SECTION 10, LEHIGH ACRES TO BE MADE AND DO HEREBY DEDICATE TO THE PERPETUAL USE OF THE PUBLIC STREETS, ROADS, DRIVES AND/OR LANES SHOWN HEREON. ALL CANAL RIGHTS OF WAY ARE HEREBY DEDICATED TO THE EAST COUNTY WATER CONTROL DISTRICT.

IN WITNESS WHEREOF GERALD H. GOULD AND EDWARD SHAPIRO, RESPECTIVELY PRESIDENT AND SECRETARY OF LEE COUNTY LAND AND TITLE COMPANY, BY AND WITH AUTHORITY OF IT'S BOARD OF DIRECTORS HAVE EXECUTED THESE PRESENTS FOR AND ON BEHALF OF SAID CORPORATION AND CAUSED IT'S CORPORATE SEAL TO BE AFFIXED THIS 5th DAY OF June A.D. 1963

LEE COUNTY LAND AND TITLE CO.

BY Gerald H. Gould PresidentATTEST Edward Shapiro SecretarySTATE OF FLORIDA
COUNTY OF LEE

I HEREBY CERTIFY THAT ON THIS DAY, BEFORE ME AN OFFICER DULY AUTHORIZED TO TAKE ACKNOWLEDGEMENTS, PERSONALLY APPEARED GERALD H. GOULD AND EDWARD SHAPIRO, RESPECTIVELY PRESIDENT AND SECRETARY OF LEE COUNTY LAND AND TITLE COMPANY, TO ME KNOWN TO BE THE PERSONS DESCRIBED IN AND WHO EXECUTED THE FOREGOING DEDICATION AS PRESIDENT AND SECRETARY RESPECTIVELY OF LEE COUNTY LAND AND TITLE COMPANY FOR THE PURPOSES THEREIN SET FORTH.

WITNESS MY HAND AND OFFICIAL SEAL AT FORT MYERS, SAID COUNTY AND STATE THIS 5th DAY OF June A.D. 1963

John W. White
NOTARY PUBLIC STATE OF FLORIDA AT LARGE
My Commission Expires Notary Public State of Florida at Large
My Commission Expires June 1st 1964

ALL BEARINGS ARE FROM THE TRUE MERIDIAN BASED ON OBSERVATION OF POLARIS AT S.W. CORNER OF SECTION 30, TOWNSHIP 44., RANGE 27., LEE COUNTY, FLORIDA.

THIS PLAT APPROVED THIS 10 DAY OF Sept A.D. 1963 IN OPEN MEETING OF THE BOARD OF COUNTY COMMISSIONERS OF LEE COUNTY, FLORIDA.

APPROVED Herman Hartings Chairman
D. R. Farabee Clerk

Frank H. Parnell County Attorney
W. W. Sale County Engineer

I HEREBY CERTIFY THAT THIS PLAT OF SECTION 10, LEHIGH ACRES, HAS BEEN EXAMINED BY ME AND FROM MY EXAMINATION I FIND THAT SAID PLAT COMPLIES IN FORM WITH THE REQUIREMENTS OF SURVEY LAWS OF FLORIDA. I FURTHER CERTIFY THAT SAID PLAT WAS FILED FOR RECORD AT FORT MYERS THIS 11 DAY OF Sept A.D. 1963, AND DULY RECORDED IN PLAT BOOK 18 ON PAGES 1-17 OF PUBLIC RECORDS OF LEE COUNTY, FLORIDA.

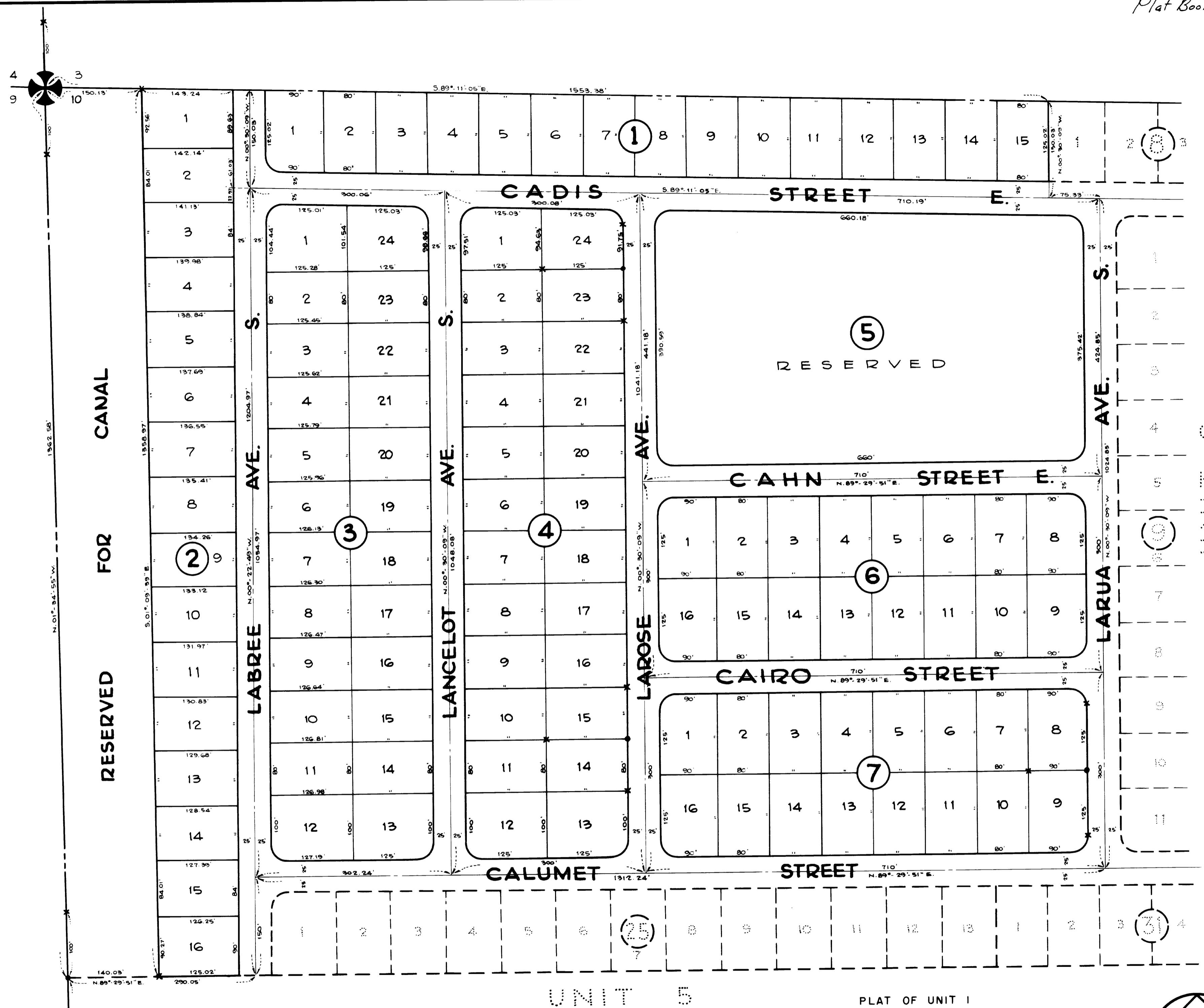
D. R. Farabee
Clerk Of The Circuit Court In And For Lee County

CERTIFICATE OF SURVEY

I HEREBY CERTIFY THAT THIS PLAT IS A CORRECT REPRESENTATION OF A SURVEY MADE UNDER MY DIRECTION AND THAT PERMANENT REFERENCE MONUMENTS HAVE BEEN PLACED AS SHOWN.

R. V. Jamme
FLORIDA REGISTERED LAND SURVEYOR No. 1198

THE OWNER DOES HEREBY DEDICATE TO THE PERPETUAL USE OF THE EAST COUNTY WATER CONTROL DISTRICT THE CANAL RIGHTS OF WAY SHOWN HEREON AND ALL PRESENT AND FUTURE WORKS BUILT OR CONSTRUCTED WITHIN THESE RIGHTS OF WAY SHALL BE OWNED AND MAINTAINED BY SAID EAST COUNTY WATER CONTROL DISTRICT.



All corner lot radii are 25 feet except as shown and the lot dimensions are to the straight line intersections, except where arc distances are shown.

All Canals are hereby dedicated to East County Water Control District.

x Witness Monument.

All lots subject to a 6 foot Utility Easement on both sides and back, and a 6 foot Drainage Easement on the front and sides of lot on 50 foot R/W.

Interior P.R.M.s are 4"x4"x24" concrete.

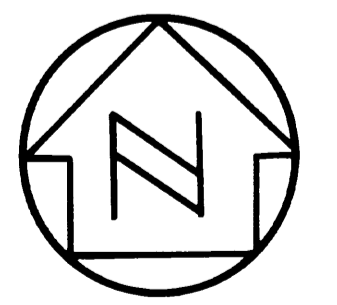
• Denotes P.R.M.s

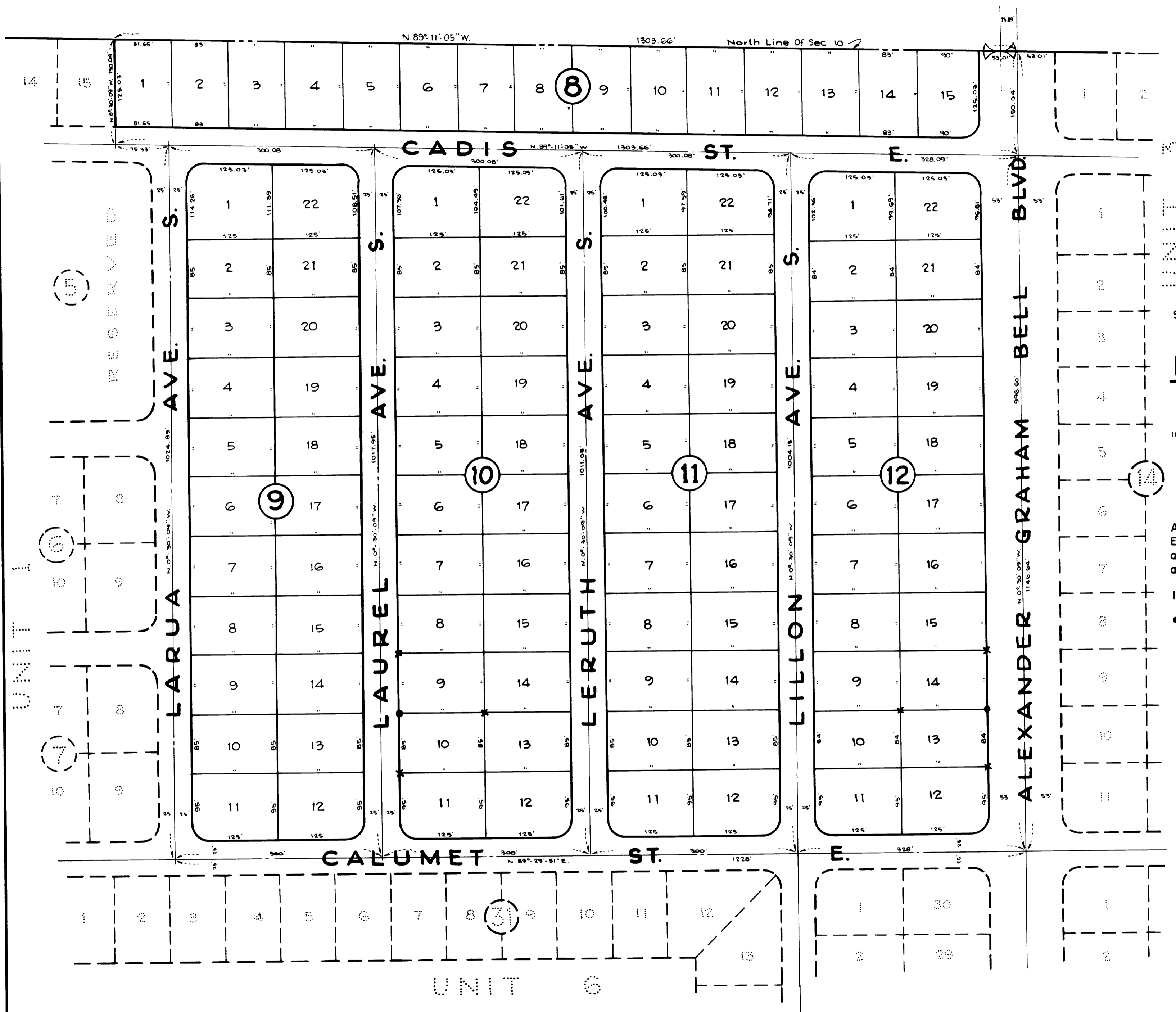
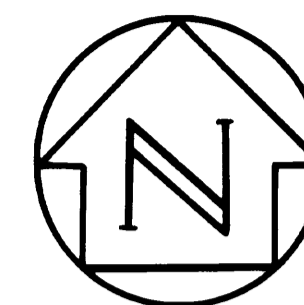
PLAT OF UNIT 1
SECTION 10, TWP. 45S., RGE. 27E.
A SUBDIVISION OF
LEHIGH ACRES

LEE COUNTY, FLORIDA



SCALE IN FEET





PLAT OF UNIT 2
SECTION 10, TWP. 45 S., RGE. 27 E.
A SUBDIVISION OF

LEHIGH ACRES

LEE COUNTY, FLORIDA



All lots subject to a 6 foot Utility Easement on both sides and back, and a 6 foot Drainage Easement on the front and sides of lot on 50 foot R/W.

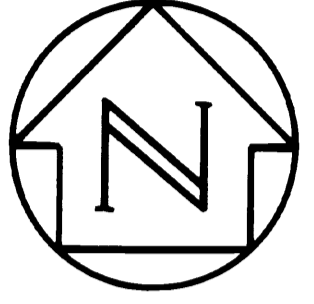
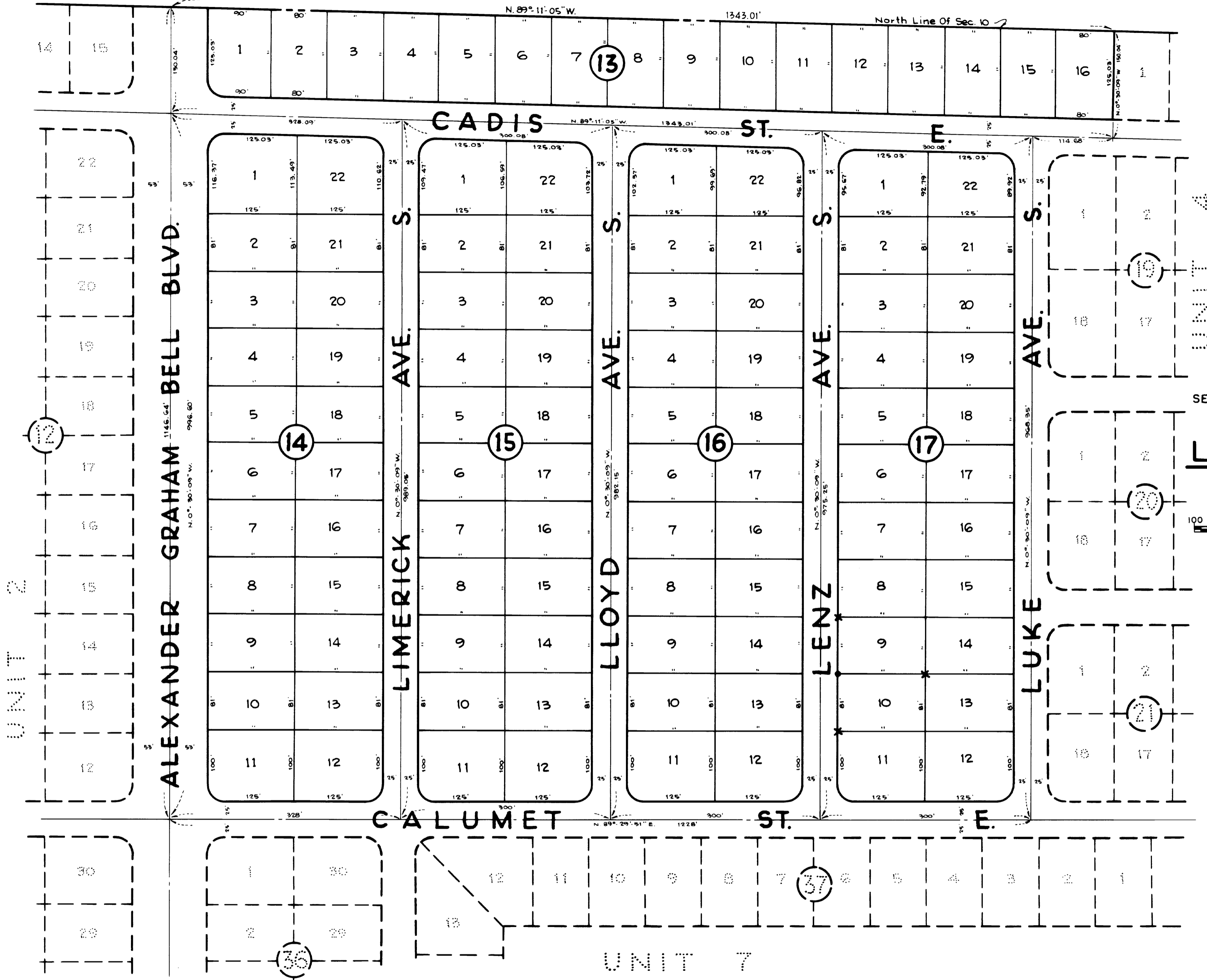
Interior P.R.M.s are 4"x 4" x 24" concrete

• Denotes P.R.M.s

All corner lot radii are 25 feet except as shown and the lot dimensions are to the straight line intersections except where arc distances are shown.

All Canals are hereby dedicated to East County Water Control District.

x Witness Monument.



PLAT OF UNIT 3
SECTION 10, TWP. 45S., RGE. 27E.
A SUBDIVISION OF

LEHIGH ACRES

LEE COUNTY, FLORIDA



All lots subject to a 6 foot Utility Easement on both sides and back, and a 6 foot Drainage Easement on the front and sides of lot on 50 foot R/W.

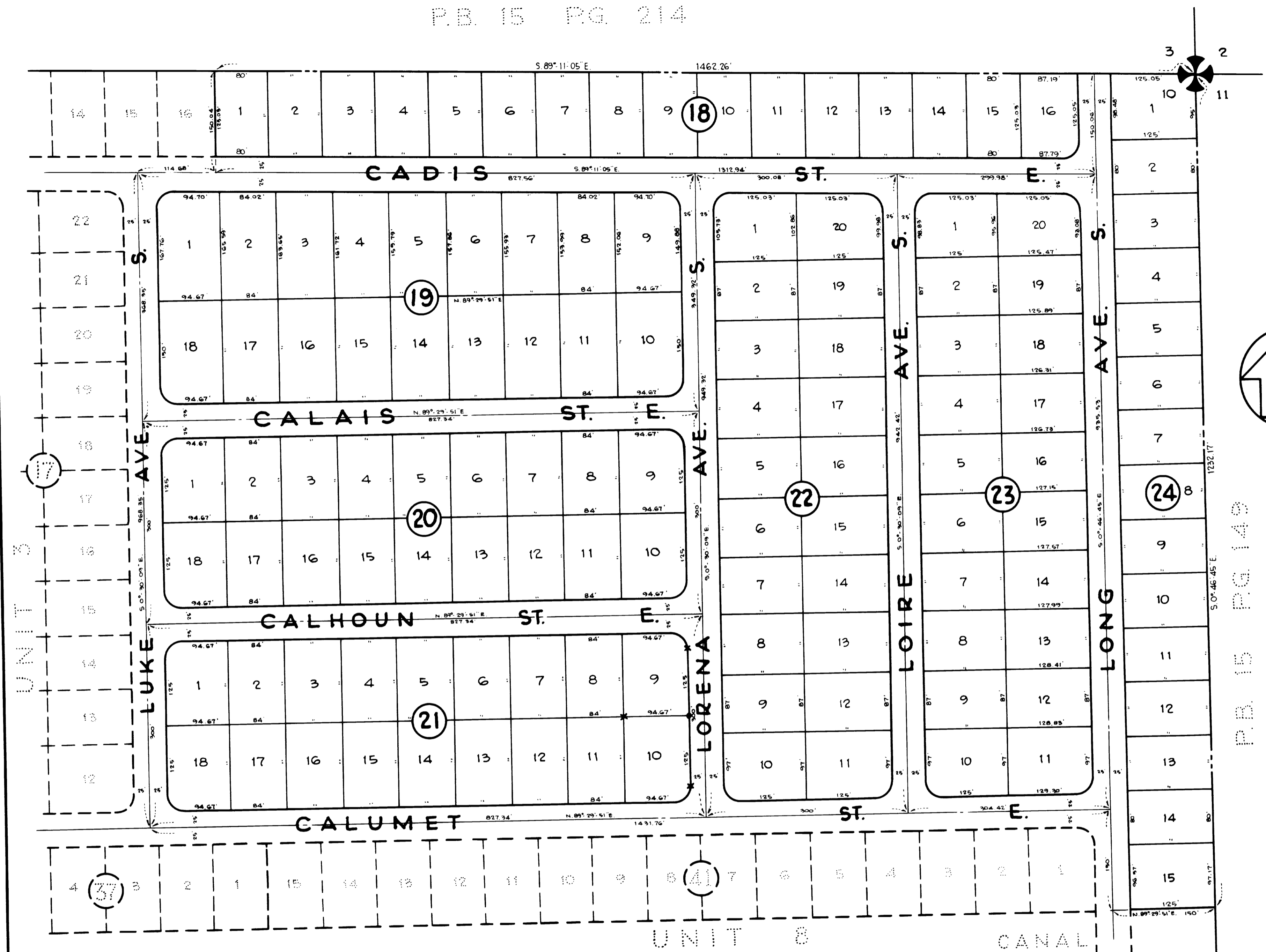
Interior P.R.M.s are 4"x 4" x 24" concrete

● Denotes P. R. M. s

All corner lot radii are 25 feet except as shown and the lot dimensions are to the straight line intersections, except where arc distances are shown.

All Canals are hereby dedicated to East County Water Control District.

x Witness Monument



All lots subject to a 6 foot Utility Easement on both sides and back, and a 6 foot Drainage Easement on the front and sides of lot on 50 foot R/W.

Interior P.R.M.s are 4" x 4" x 24" concrete.

• Denotes P.R.M.s

All corner lot radii are 25 feet except as shown and the lot dimensions are to the straight line intersections, except where arc distances are shown.

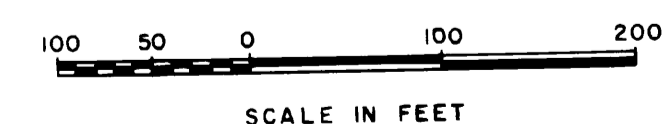
All Canals are hereby dedicated to East County Water Control District.

x Witness Monument.

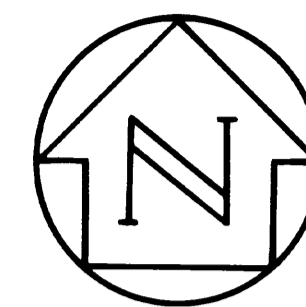
PLAT OF UNIT 4
SECTION 10, TWP. 45S., RGE. 27E.
A SUBDIVISION OF

LEHIGH ACRES

LEE COUNTY, FLORIDA



Petition to Vacate
Petition No: 99-05-137.01R
Description: 12ft wide public utility easement; See CCMB
Date of Approval: 10/12/99
Resolution No: 99-10-17
CCMB: 1999R Page: 577
Recorded on: 11/10/99 OR Book: 3183
Page: 3752-3755



PLAT OF UNIT 5
SECTION 10, TWP. 45 S., RGE. 27 E.
A SUBDIVISION OF

LEHIGH ACRES

LEE COUNTY, FLORIDA



All lots subject to a 6 foot Utility Easement on both sides and back, and a 6 foot Drainage Easement on the front and sides of lot on 50 foot R/W.

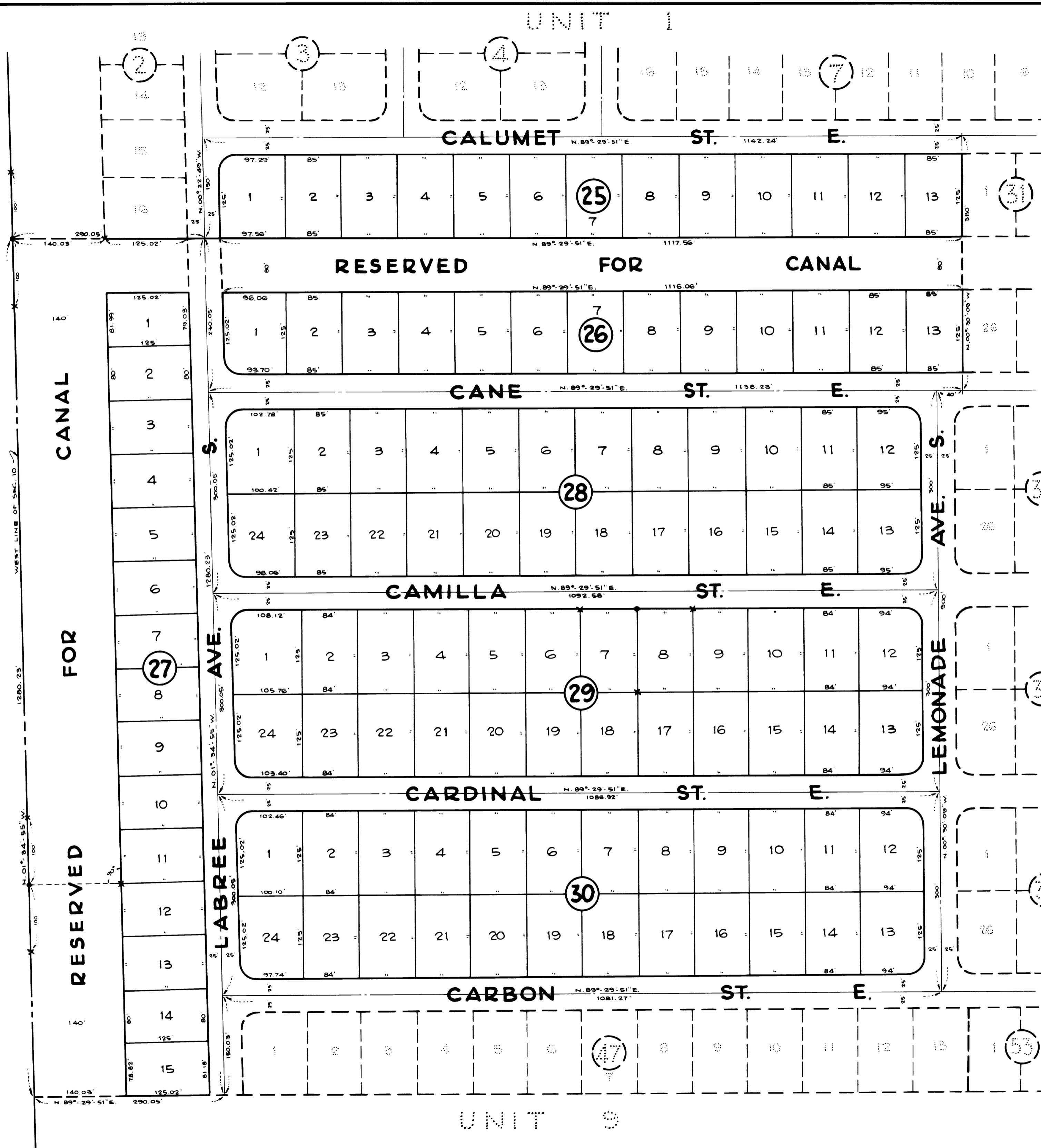
Interior P.R.M.s are 4" x 4" x 24" concrete.

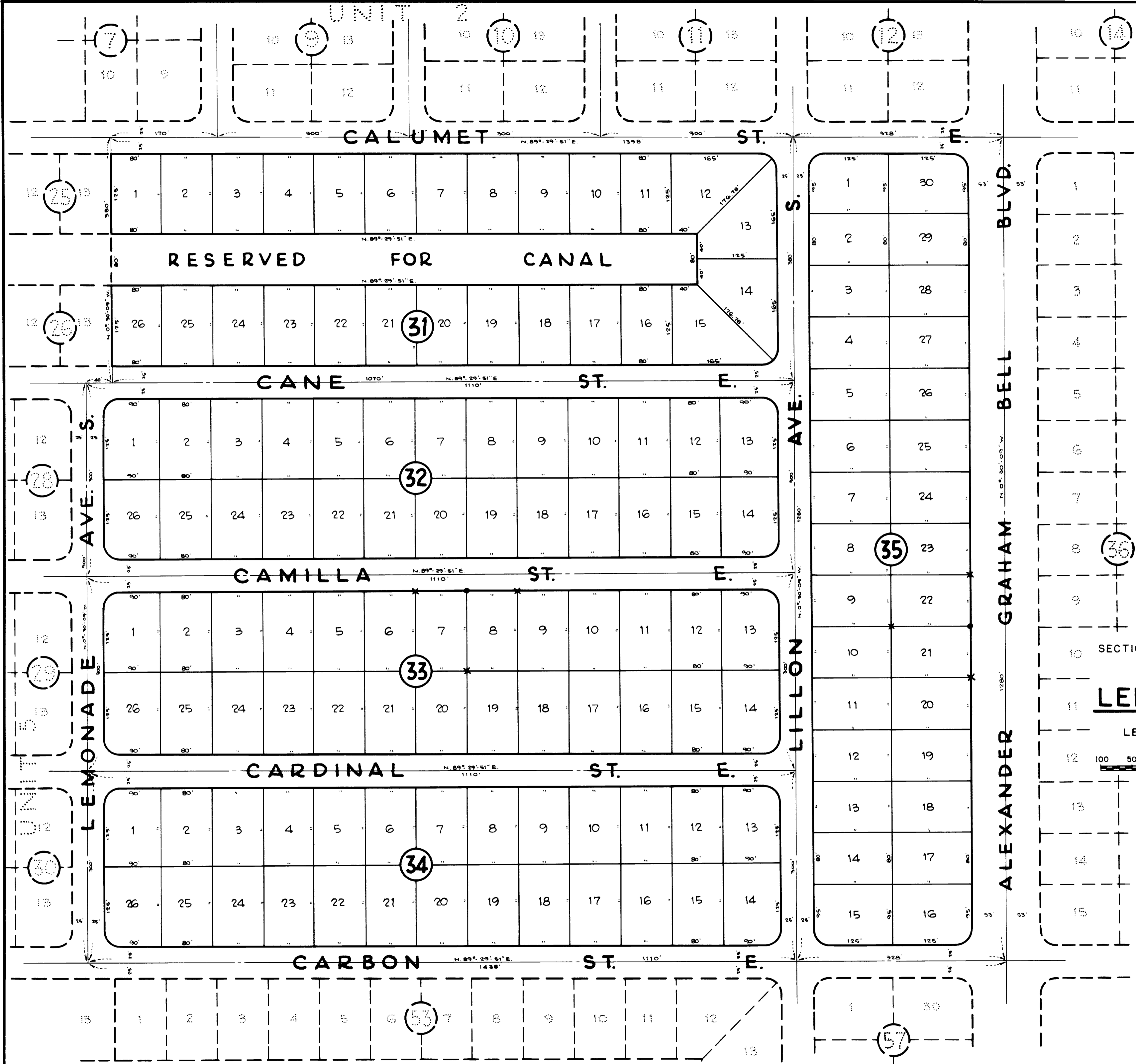
• Denotes P.R.M.s

All corner lot radii are 25 feet except as shown and the lot dimensions are to the straight line intersections, except where arc distances are shown.

All Canals are hereby dedicated to East County Water Control District.

x Witness Monument.

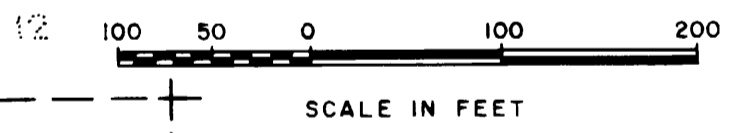




PLAT OF UNIT 6
SECTION 10, TWP. 45 S., RGE. 27 E.
A SUBDIVISION OF

LEHIGH ACRES

LEE COUNTY, FLORIDA



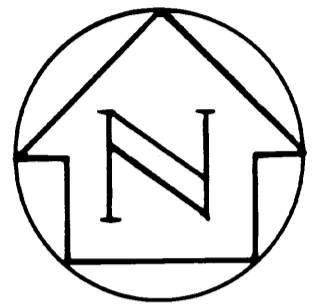
All lots subject to a 6 foot Utility Easement on both sides and back, and a 6 foot Drainage Easement on the front and sides of lot on 50 foot R/W.

● Denotes P.R.M.s

All corner lot radii are 25 feet except as shown and the lot dimensions are to the straight line intersections, except where arc distances are shown.

All Canals are hereby dedicated to East County Water Control District.

Interior P.R.M.s are 4"x4"x24" concrete.
x Witness Monuments.



PLAT OF UNIT 7
SECTION 10, TWP. 45 S., RGE 27 E.
A SUBDIVISION OF

LEHIGH ACRES

LEE COUNTY, FLORIDA



All lots subject to a 6 foot Utility Easement on both sides and back, and a 6 foot Drainage Easement on the front and sides of lot on 50 foot R/W.

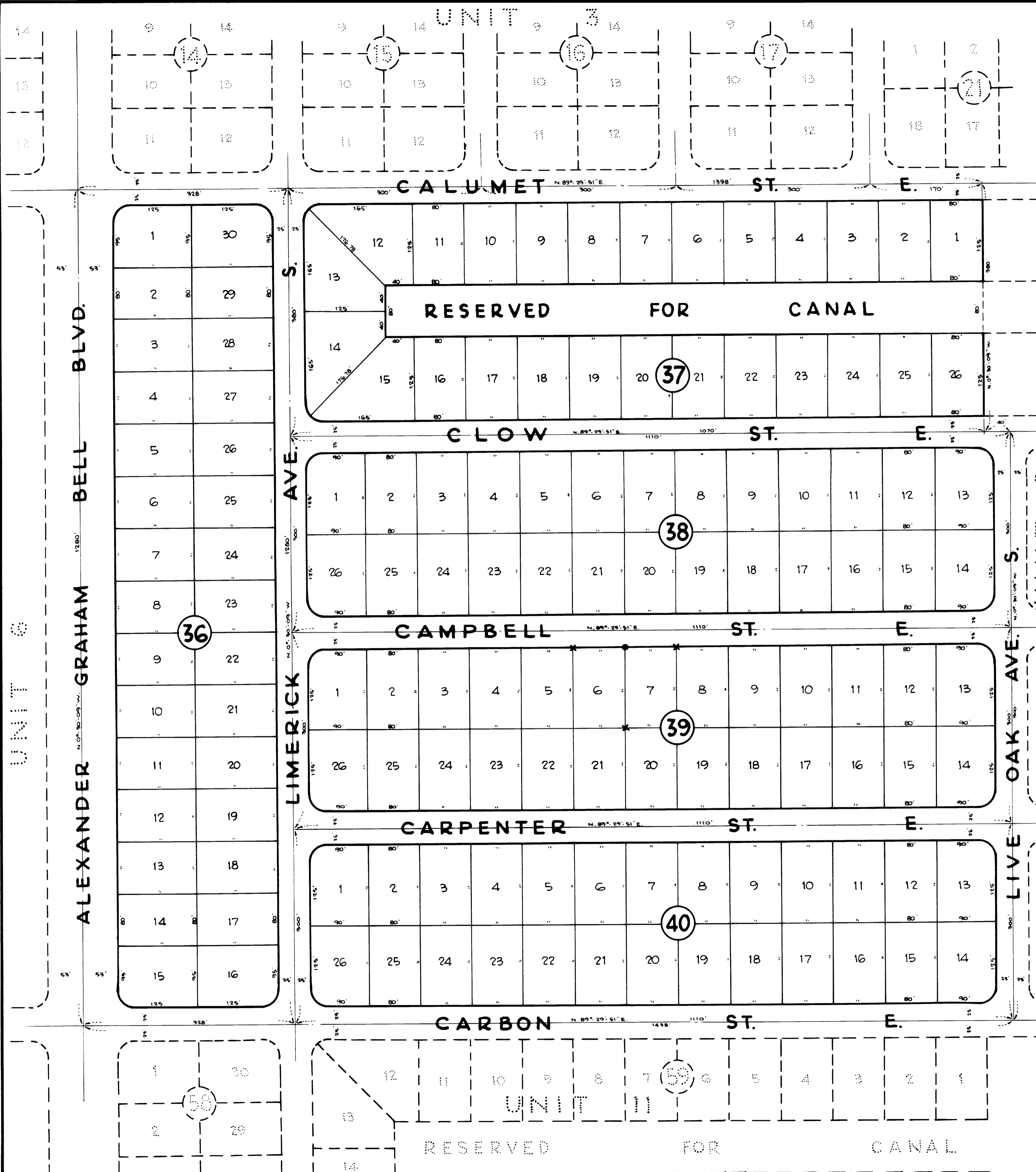
Interior P.R.M.s are 4"x4"x24" concrete.

● Denotes P.R.M.s

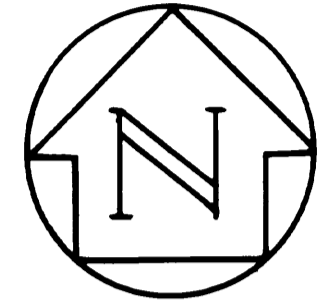
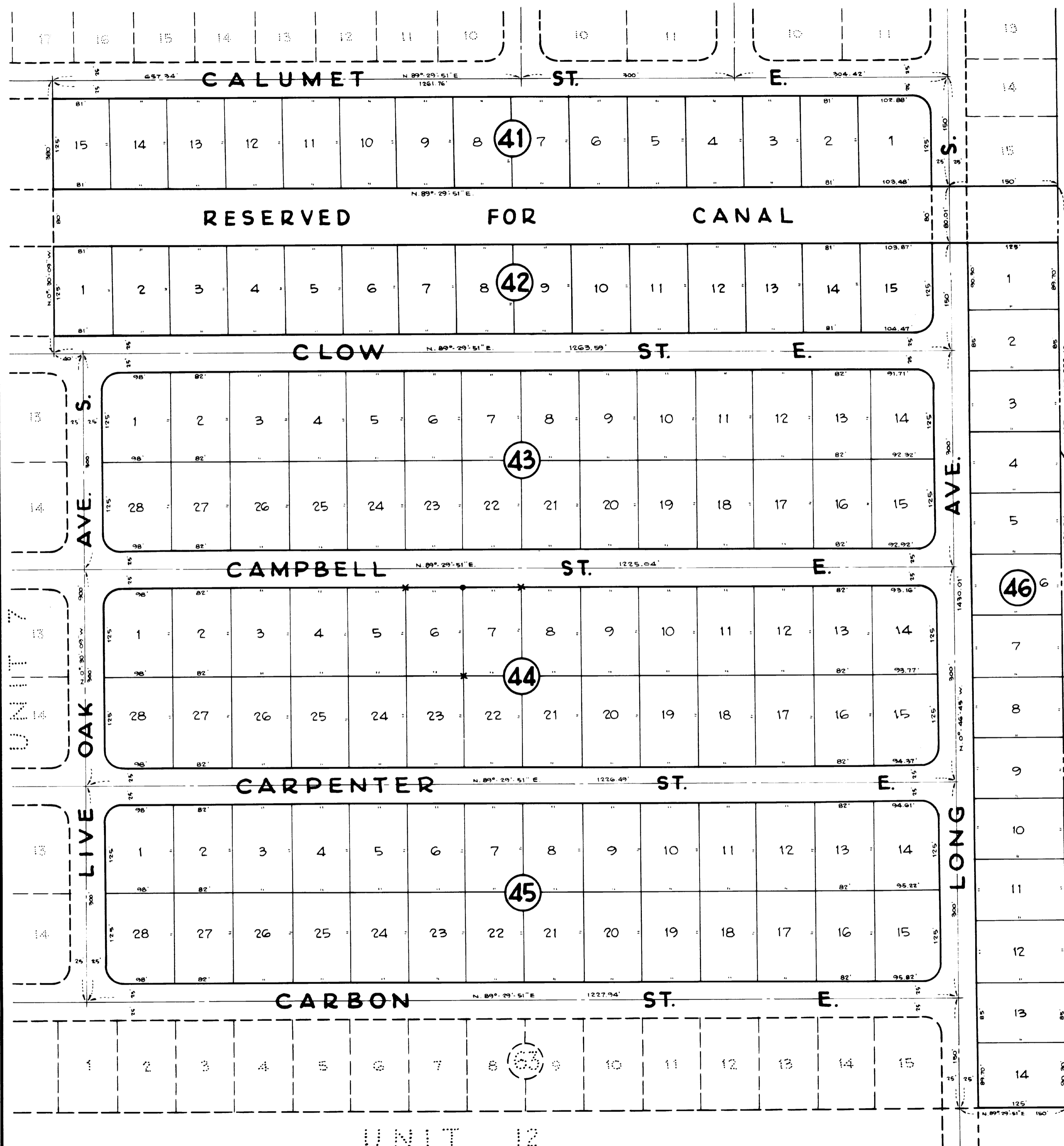
All corner lot radii are 25 feet except as shown and the lot dimensions are to the straight line intersections, except where arc distances are shown.

All Canals are hereby dedicated to East County Water Control District.

x Witness Monument



UNIT 4



Petition to Vacate
 Petition No: 99-06-167.01R
 Description: 12ft utility & drainage easement; See CCMB
 Date of Approval: 09/14/99
 Resolution No: 99-09-30
 CCMB: 1999R Page: 522
 Recorded on: 09/24/99 OR Book: 3170 Page: 4702-4705

PLAT OF UNIT 8
 SECTION 10, TWP. 45 S., RGE. 27 E.
 A SUBDIVISION OF
LEHIGH ACRES

LEE COUNTY, FLORIDA



All lots subject to a 6 foot Utility Easement on both sides and back, and a 6 foot Drainage Easement on the front and sides of lot on 50 foot R/W.

Interior P.R.M.s are 4"x4"x24" concrete

• Denotes P.R.M.s

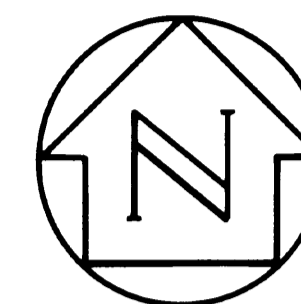
All corner lot radii are 25 feet except as shown and the lot dimensions are to the straight line intersections except where arc distances are shown.

All Canals are hereby dedicated to East County Water Control District.

x Witness Monument.

PETITION TO VACATE: VAC2017-00012; DESCRIPTION: THE 12FT WIDE PUBLIC UTILITY EASEMENT CENTERED ON THE COMMON LOT LINE BETWEEN L 6, 7, BLK 43, U8, SEC 10, TWN 45S, RNG 27E, A SUBDIVISION OF LEHIGH ACRES; PB18/PG9; DATE OF APPROVAL: 01/16/2018 - 9:30 AM PH2; RESOLUTION NO. 18-01-16; INSTR#2018000017624

UNIT 5



PLAT OF UNIT 9
SECTION 10, TWP. 45 S., RGE. 27E.
A SUBDIVISION OF
LEHIGH ACRES

LEE COUNTY, FLORIDA



All lots subject to a 6 foot Utility Easement on both sides and back, and a 6 foot Drainage Easement on the front and sides of lot on 50 foot R/W

Interior P.R.M.s are 4" x 4" x 24" concrete.

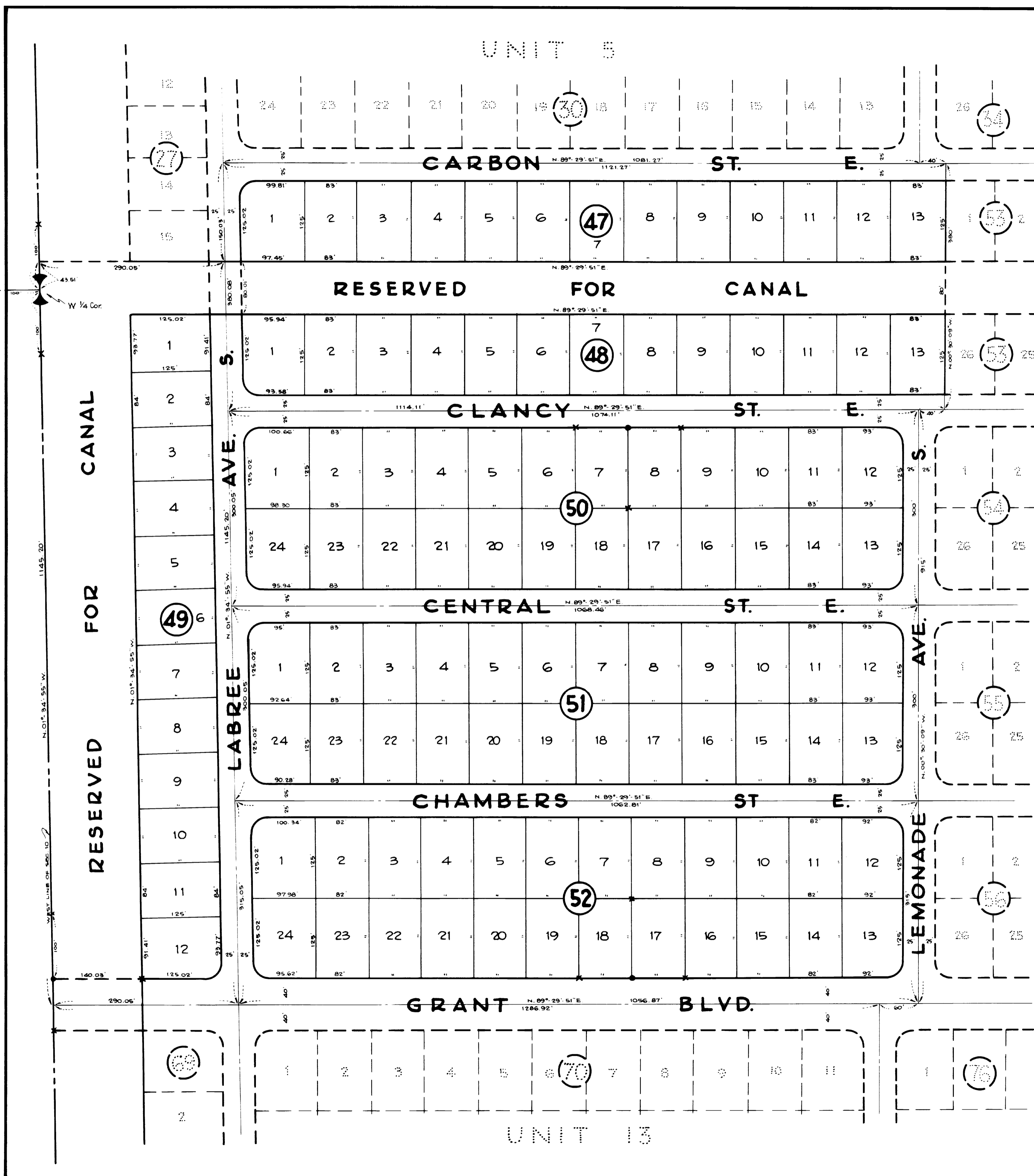
• Denotes P. R. M. s

All corner lot radii are 25 feet except as shown and the lot dimensions are to the straight line intersections, except where arc distances are shown.

All Canals are hereby dedicated to East County Water Control District.

x Witness Monument

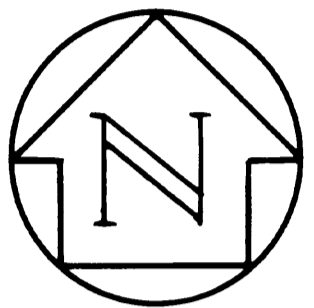
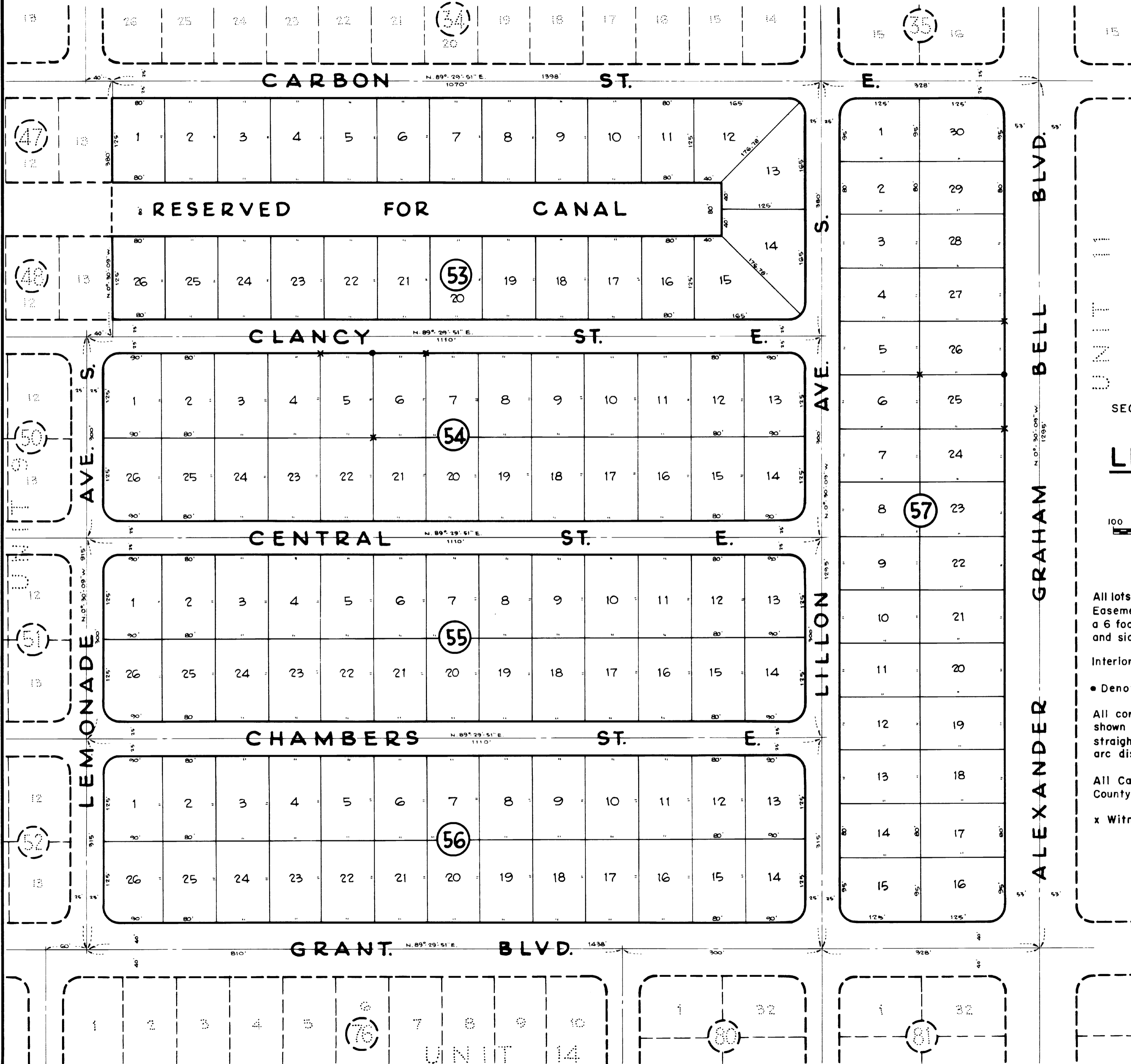
Petition to Vacate
Petition No:96-11-048.01R
Description: See CCMB
Date of Approval:12/18/96
Resolution No:96-12-101
CCMB:1996R Page:763
Recorded on:01/09/97 OR Book:2778 Page:2978-2981



UNIT 13

UNIT 6

UNIT 7



PLAT OF UNIT 10
SECTION 10, TWP. 45 S., RGE 27 E.
A SUBDIVISION OF

LEHIGH ACRES

LEE COUNTY, FLORIDA



All lots subject to a 6 foot Utility Easement on both sides and back, and a 6 foot Drainage Easement on the front and sides of lot on 50 foot R/W.

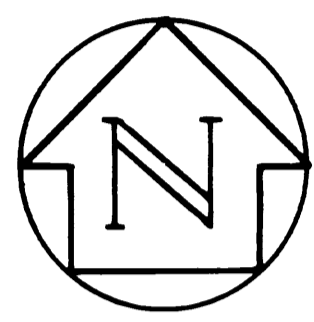
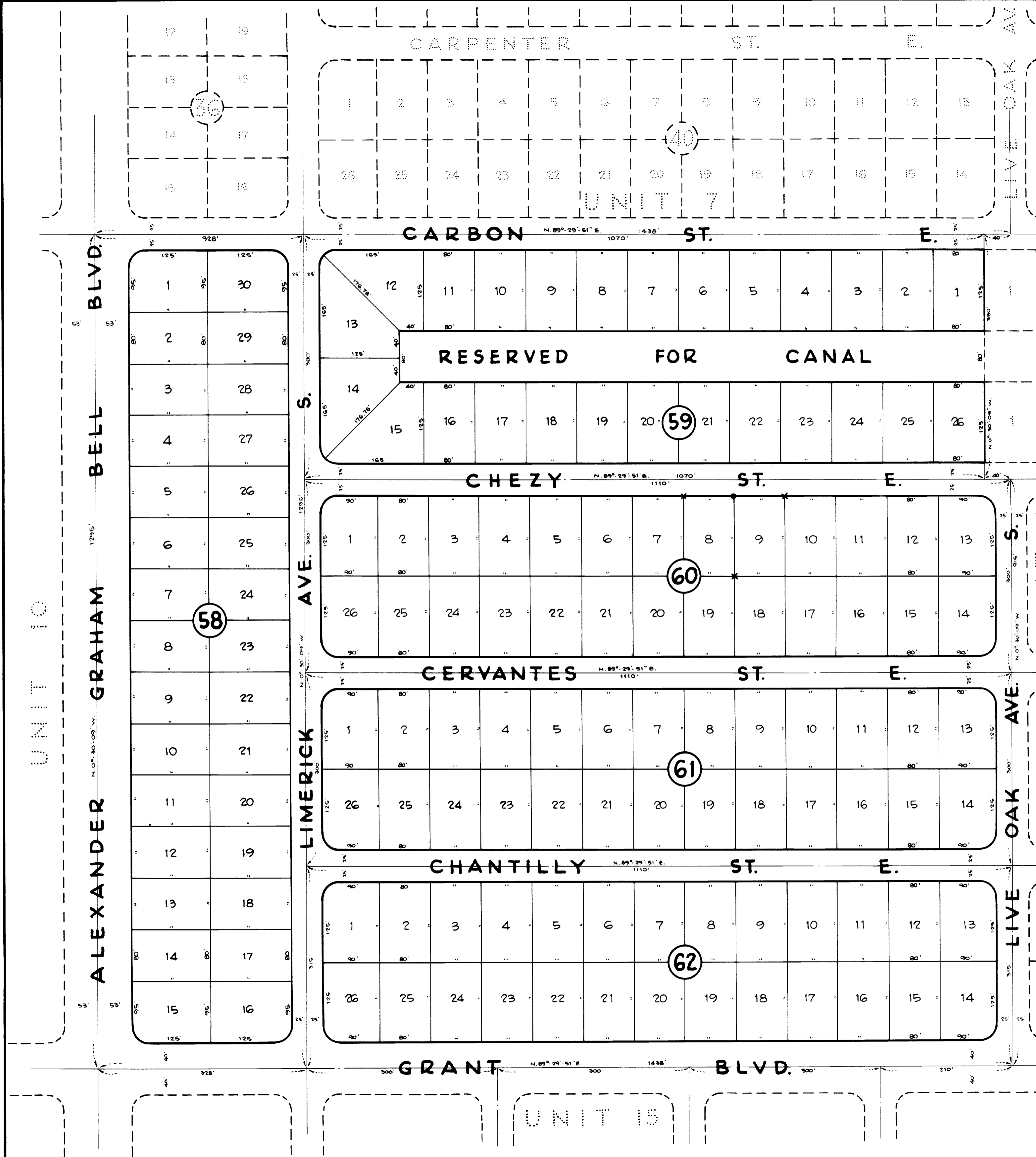
Interior P.R.M.s are 4"x4"x24" concrete.

• Denotes P.R.M.s

All corner lot radii are 25 feet except as shown and the lot dimensions are to the straight line intersections, except where arc distances are shown.

All Canals are hereby dedicated to East County Water Control District.

x Witness Monument.



PLAT OF UNIT 10
SECTION 10, TWP. 45 S., RGE. 27 E.
A SUBDIVISION OF
LEHIGH ACRES
LEE COUNTY, FLORIDA

100 50 0 100 200
SCALE IN FEET

All lots subject to a 6 foot Utility Easement on both sides and back, and a 6 foot Drainage Easement on the front and sides of lot on 50 foot R/W.

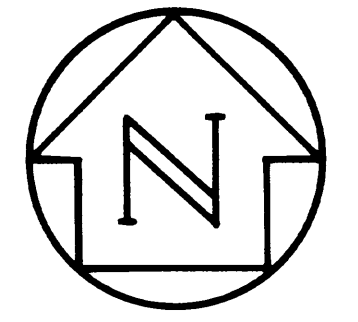
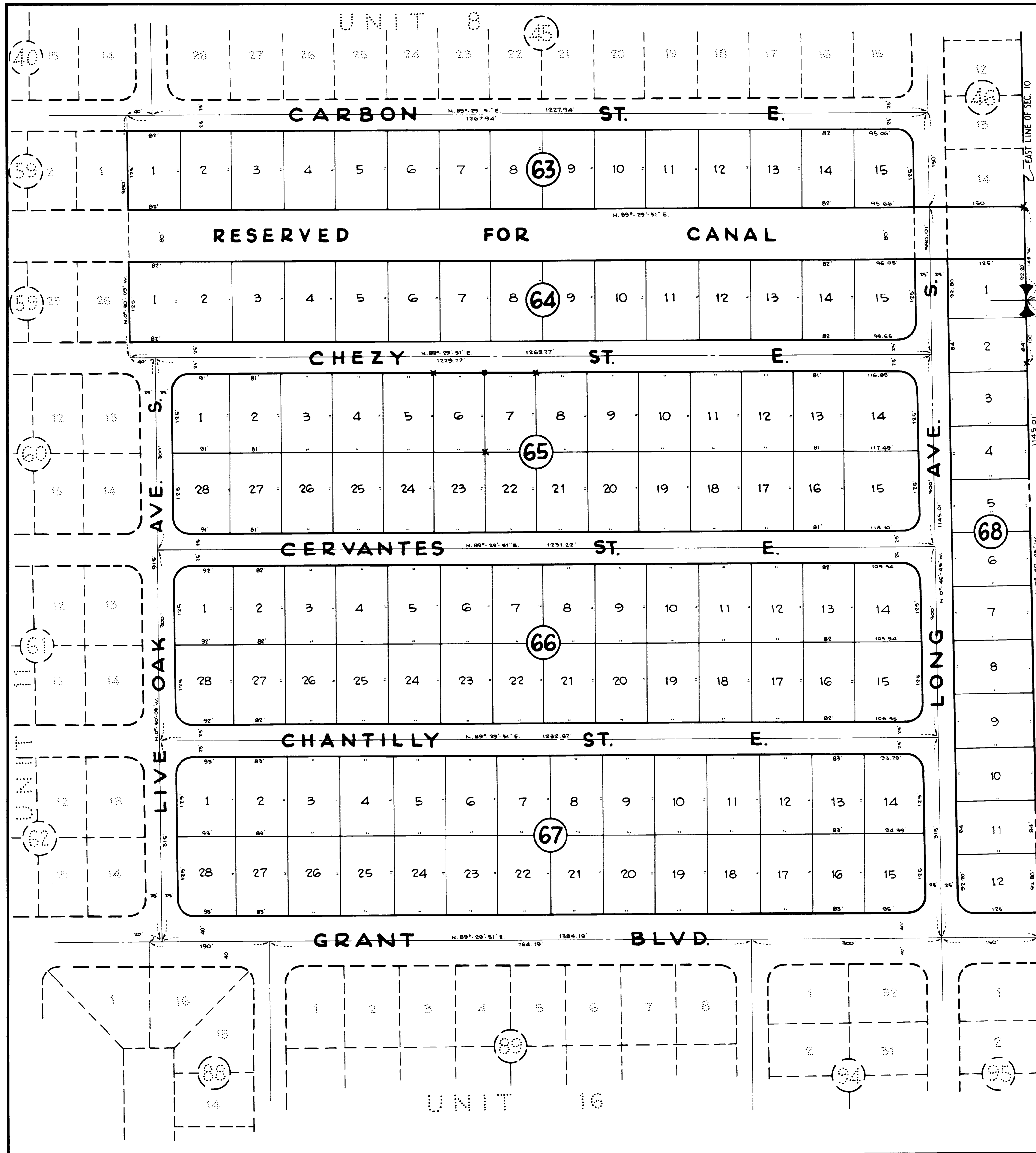
Interior P.R.M.s are 4"x 4"x 24" concrete.

• Denotes P.R.M.s

All corner lot radii are 25 feet except as shown and the lot dimensions are to the straight line intersections, except where arc distances are shown.

All Canals are hereby dedicated to East County Water Control District.

x Witness Monument.



PLAT OF UNIT 12
SECTION 10, TWP. 45 S., RGE. 27 E.
A SUBDIVISION OF
LEHIGH ACRES

LEE COUNTY, FLORIDA



All lots subject to a 6 foot Utility Easement on both sides and back, and a 6 foot Drainage Easement on the front and sides of lot on 50 foot R/W

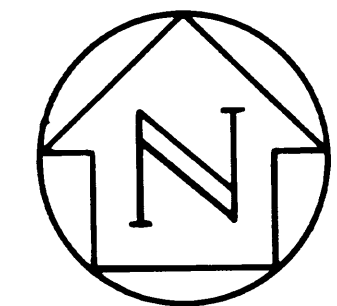
Interior P.R.M.s are 4"x4"x24" concrete.

• Denotes P.R.M.s

All corner lot radii are 25 feet except as shown and the lot dimensions are to the straight line intersections, except where arc distances are shown.

All Canals are hereby dedicated to East County Water Control District.

x Witness Monument.

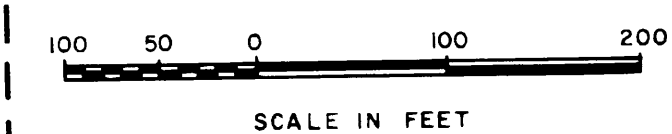


UNIT 15

PLAT OF UNIT 14
SECTION 10, TWP. 45 S., RGE. 27 E.
A SUBDIVISION OF

LEHIGH ACRES

LEE COUNTY, FLORIDA



All lots subject to a 6 foot Utility Easement on both sides and back, and a 6 foot Drainage Easement on the front and sides of lot on 50 foot R/W.

Interior P.R.M.s are 4' x 4' x 24' concrete.

• Denotes P. R. M. s

All corner lot radii are 25 feet except as shown and the lot dimensions are to the straight line intersections except where arc distances are shown.

All Canals are hereby dedicated to East County Water Control District.

x Witness Monument.

Petition to Vacate
Petition No: 95-03-083.01R
Description: A portion of the utility & drainage easements. See CCMB
Date of Approval: 07/05/95
Resolution No: 95-07-17
CCMB: 1995R Page: 427
Recorded on: 07/19/95 OR Book: 2618 Page: 2272-2276

Petition to Vacate
Petition No: 2003-00018
Description: 12ft public utility & drainage easement. See CCMB
Date of Approval: 06/10/03
Resolution No: 03-06-15
CCMB: 2003R Page: 398
Recorded on: 06/23/03 OR Book: 3967
Page: 1477-1480

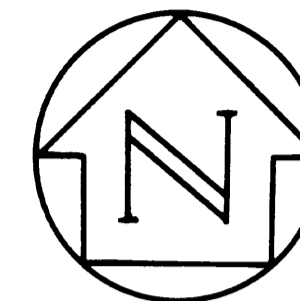


UNIT 11

UNIT 12

Plat Book 18

Page 16



Petition to Vacate
 Petition No: 94-07
 Description: Limrick & Linda btwn
 Grant & Chemstrand, Blocks 82, 83, 84
 See CCMB
 Date of Approval: 06/15/94
 Resolution No: 94-06-31
 CCMB: 1994R Page: 400
 Recorded on: 11/10/94 OR Book: 2550 Page: 4158-4160

PLAT OF UNIT 15
 SECTION 10, TWP. 45 S., RGE. 27 E.
 A SUBDIVISION OF

LEHIGH ACRES

LEE COUNTY, FLORIDA



All lots subject to a 6 foot Utility
 Easement on both sides and back, and
 a 6 foot Drainage Easement on the front
 and sides of lot on 50 foot R/W.

Interior P.R.M.s are 4"x4"x24" concrete.

• Denotes P.R.M.s

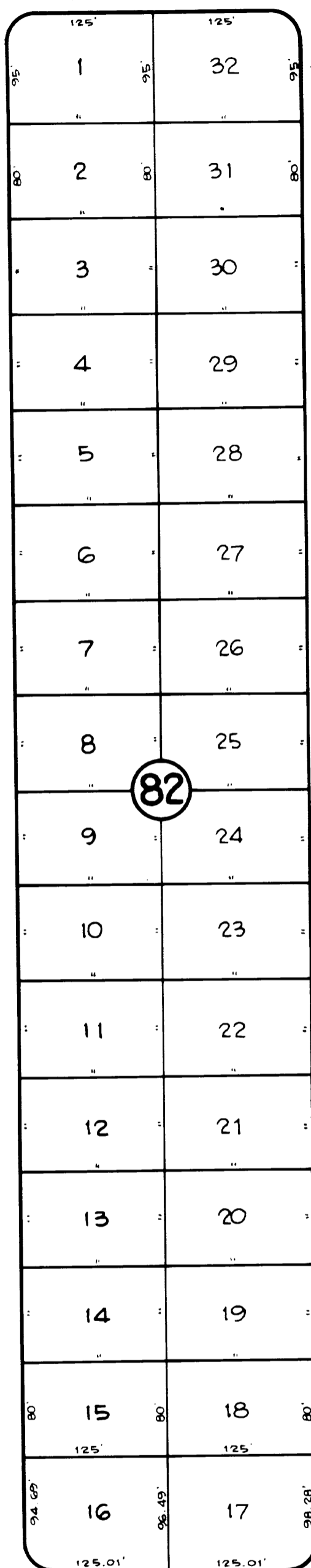
All corner lot radii are 25 feet except as
 shown and the lot dimensions are to the
 straight line intersections, except where
 arc distances are shown.

All Canals are hereby dedicated to East
 County Water Control District.

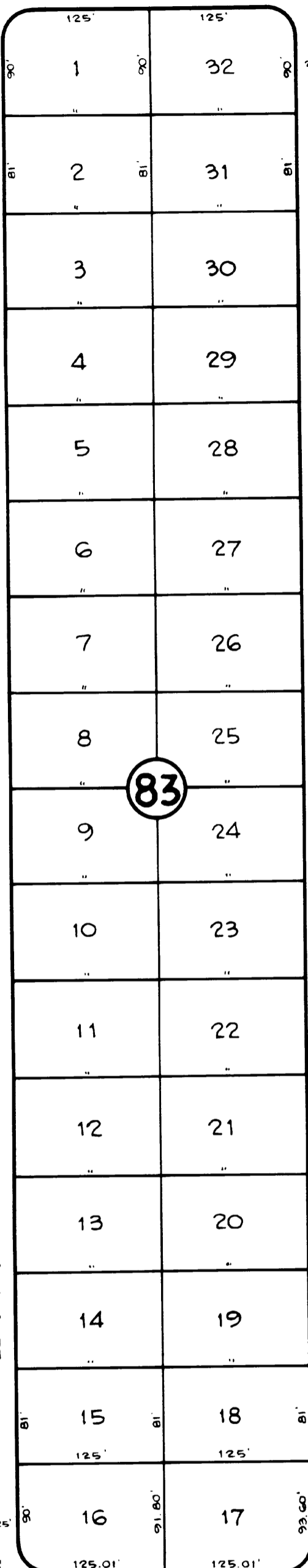
x Witness Monument.

UNIT 14

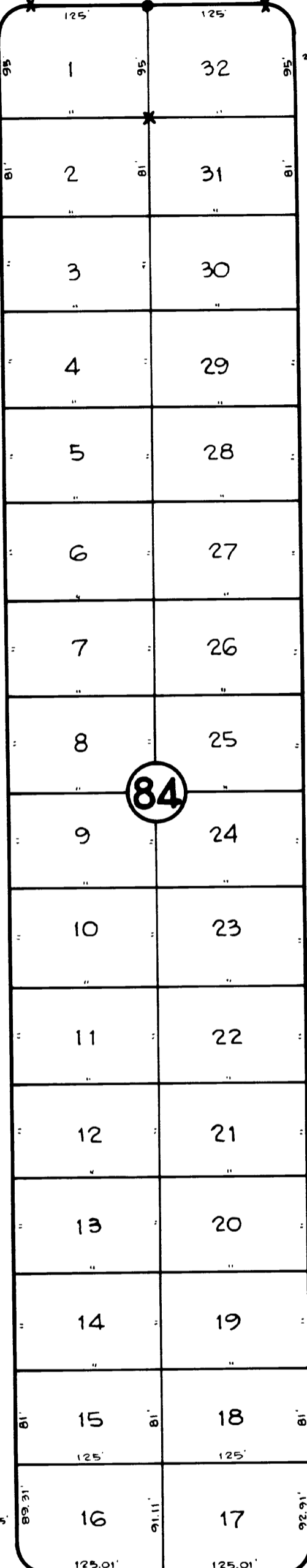
ALEXANDER GRAHAM BELL BLVD.



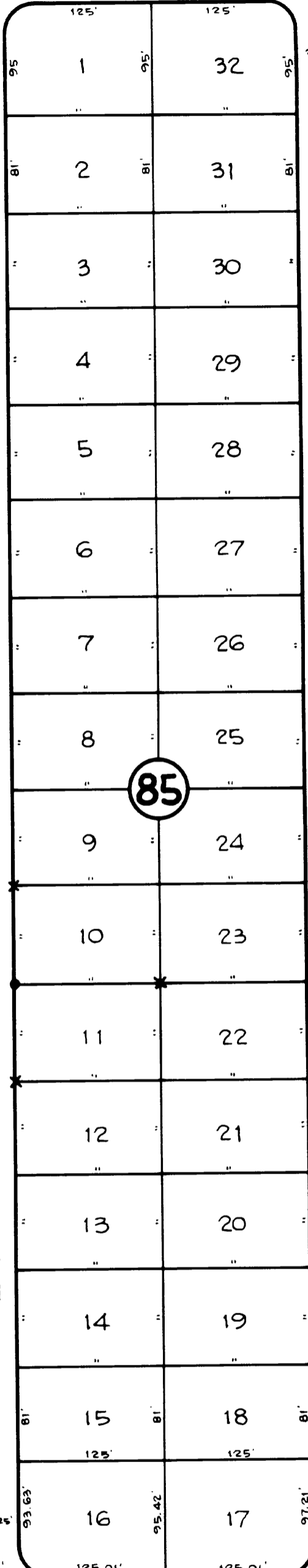
S. LIMERICK AVE.



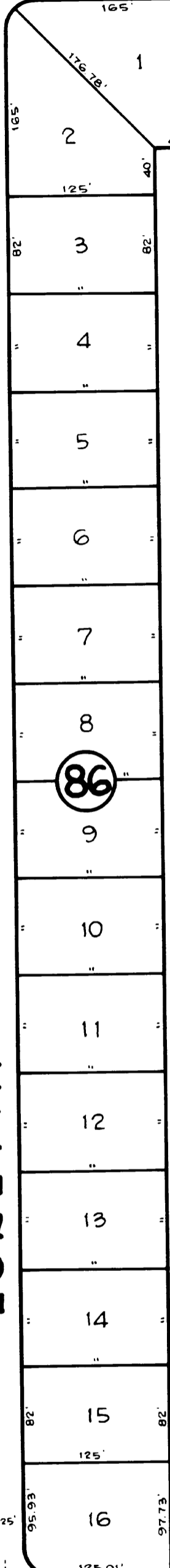
S. LINDA AVE.



S. LINDEN AVE.

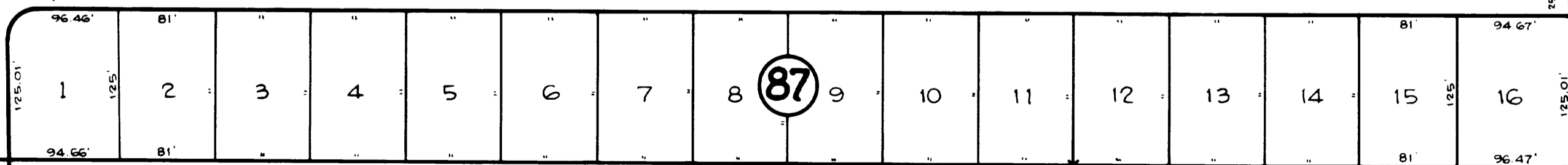


S. LORETTA AVE.



RESERVED FOR CANAL

CHEMSTRAND ST. E.



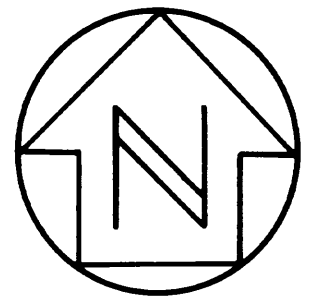
RESERVED FOR CANAL

S. 1/4 Cor.

SOUTH LINE SEC. 10

S. 89° 40' 45" E.

1418.14'



PLAT OF UNIT 16
SECTION 10, TWP. 45S., RGE. 27E.
A SUBDIVISION OF
LEHIGH ACRES
LEE COUNTY, FLORIDA



All lots subject to a 6 foot Utility Easement on both sides and back, and a 6 foot Drainage Easement on the front and sides of lot on 50 foot R/W.

Interior P.R.M.s are 4"x4"x24" concrete.

• Denotes P.R.M.s

All corner lot radii are 25 feet except as shown and the lot dimensions are to the straight line intersections, except where arc distances are shown.

All Canals are hereby dedicated to East County Water Control District.

x Witness Monument.

